

Technical data sheet

Product features



Freezing cabinet 700 l GN 2/1, stainless steel, left door

Model	SAP Code	00021702
--------------	-----------------	----------



- GN / EN size in device: GN 2/1
- Chamber volume [l]: 458
- Minimum device temperature [°C]: -2
- Maximum device temperature [°C]: 7
- Insulation thickness [mm]: 90
- Door lock: No
- Annual energy consumption [kWh]: 332

SAP Code	00021702	Gross Volume [m3]	1.445
Net Width [mm]	733	Net Volume [m3]	1.328
Net Depth [mm]	867	Number of GN / EN	24
Net Height [mm]	2090	GN / EN size in device	GN 2/1
Net Weight [kg]	149.20	Minimum device temperature [°C]	-2
Loading	230 V / 1N - 50 Hz	Maximum device temperature [°C]	7
Chamber volume [l]	458	Refrigerant	R290

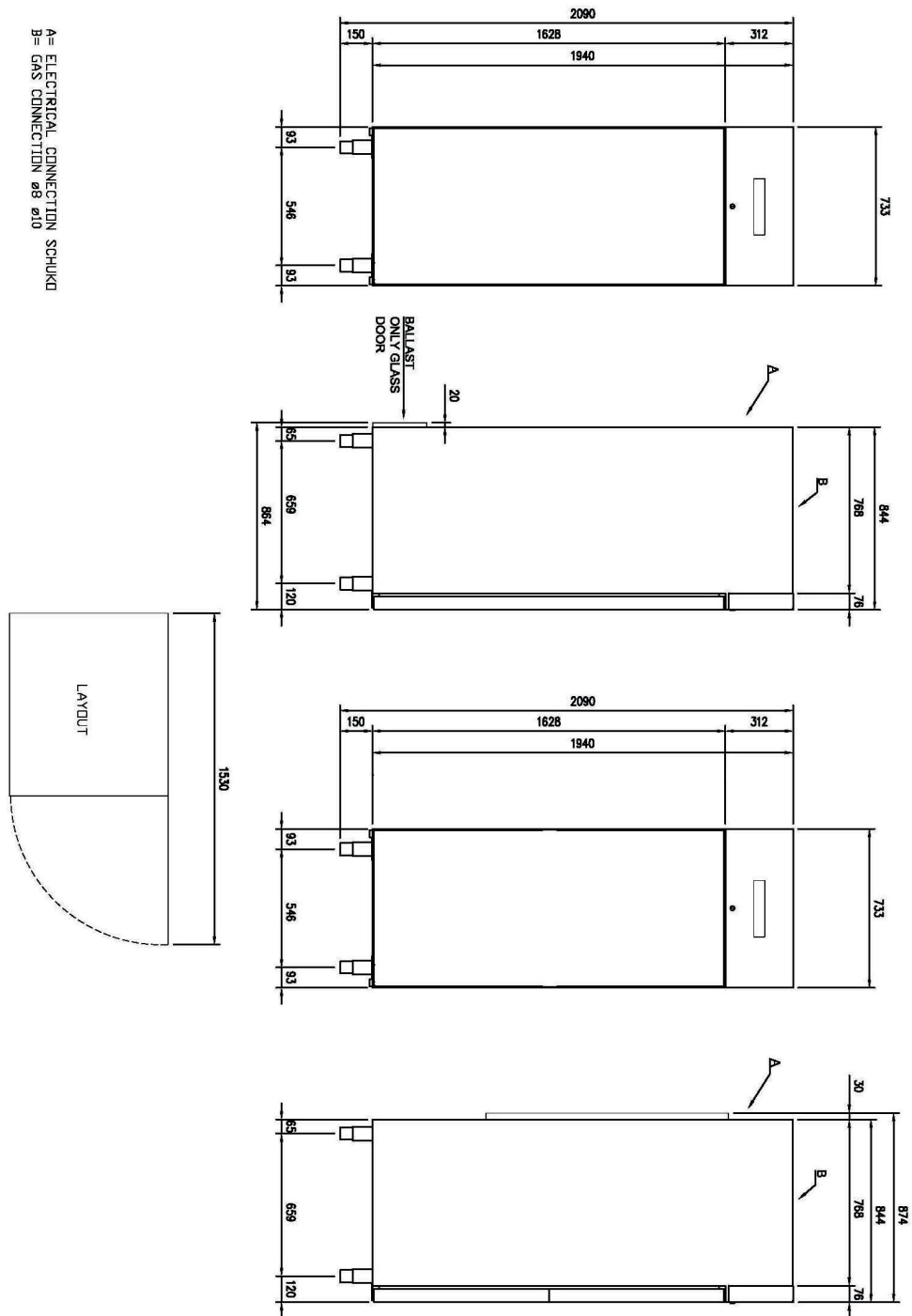
Technical data sheet

Technical drawing



Freezing cabinet 700 l GN 2/1, stainless steel, left door

Model	SAP Code	00021702
--------------	-----------------	----------



Technical data sheet

Product benefits



Freezing cabinet 700 l GN 2/1, stainless steel, left door

Model

SAP Code

00021702

1

Insulation 90mm

minimal losses
– energy saving

2

Two-sided opening

location variability
– greater operational efficiency
– better kitchen ergonomics

3

All-stainless design

corrosion resistance
– longer service life
– health safety

4

Automatic defrosting

nothing needs to be watched
– always working properly without extra operator requirements

5

Wheels, legs

variability
– user comfort

6

High energy class

minimal energy loss
high efficiency
guaranteed chilled food
– cost saving
– hygienic safety

Technical data sheet

Technical parameters



Freezing cabinet 700 l GN 2/1, stainless steel, left door

Model

SAP Code

00021702

1. SAP Code:

00021702

2. Net Width [mm]:

733

3. Net Depth [mm]:

867

4. Net Height [mm]:

2090

5. Net Weight [kg]:

149.20

6. Gross Width [mm]:

763

7. Gross depth [mm]:

873

8. Gross Height [mm]:

2170

9. Gross Weight [kg]:

164.20

10. Device type:

Electric unit

11. Loading:

230 V / 1N - 50 Hz

12. Refrigerant:

R290

13. Material:

AISI 304

14. Max ambient temperature [°C]:

40

15. Device properties 2:

Cooling

16. GN / EN size in device:

GN 2/1

17. Number of GN / EN:

24

18. Chamber volume [l]:

458

19. Gross Volume [m3]:

1.445

20. Net Volume [m3]:

1.328

21. Adjustable feet:

Yes

22. Insulation thickness [mm]:

90

23. Unit:

No

24. Door lock:

No

25. Annual energy consumption [kWh]:

332

26. Minimum device temperature [°C]:

-2

27. Maximum device temperature [°C]:

7

28. Number of grids:

3